

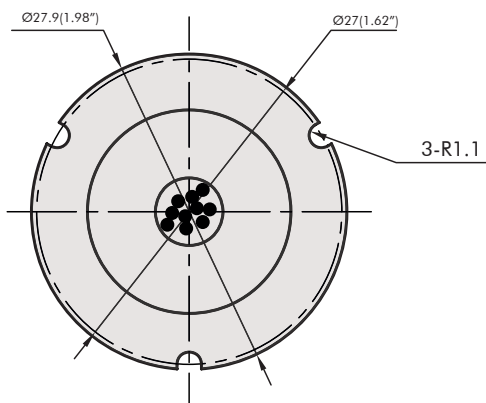
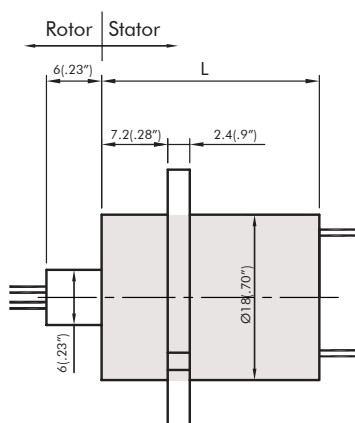
# CAPSULE TYPE SLIP RING

## OD: 18mm

### Description

Capsule Type Slip Ring REC – Model RC18 Series OD: 18mm

RC18 Series capsule type Slip Ring can be used in any electromechanical system that is requiring unlimited, continuous rotation for transmitting power and/or signal data from a stable structure to rotational structure. With a case diameter as 18mm, the product can be easily mounted on any end point or in any structure. These products, that have aluminium case and many types of flanges though. Also, the fiber brushes do not require lubrication and maintenance, almost no wearing down during its lifelong. This type of slip rings uses a bunch of fiber brush technology in the ring and a few of the brushes and rings contact are provided on a point. This ensures long life and uninterrupted transmission.



Sizes mm (inc)

### Standart Product List of RC18 Series

Models	Body (mm)	(L=mm)	Rated Current S(2A)	Number of Total Circuit
RC18.S0602	18	15,9	2A	6
RC18.S1202	18	24	2A	12

### Features

Outer Diameter is 18mm It has 6-14 channels. It can be combined as 2 amperage and multiples on power circuits. It supports all the models of video, kontrol, sensore ,power, ethernet signal channels. It is convenient to use according to all of the signal protocols. It has gold contacts and silver brushes, ABS body.

### Options

Cable Length, Mechanical Design, Flange Option, IP Class, Operating Temperature, Cable Output Point, Different Current Values, Case Options as AL or ABS, Military Standards

### Electrical Information

Features	Values
Rated Voltage	240VDC/240VAC
Rated Current	2A/ring
Cable Size	AWG28, colour coded, PTFE insulator, silver plated copper
Cable Length	250mm
Dielectric Strength	500VAC@50Hz, 60s
Insulation Resistance	1000MΩ/500VDC
Electrical Noise	<0.01Ω

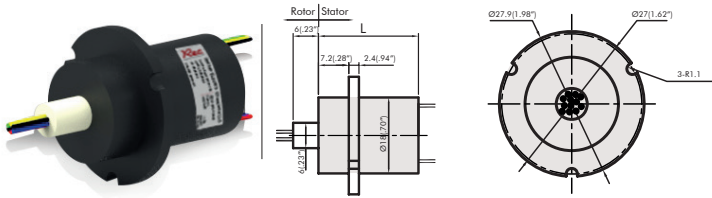
### Mechanical Information

Features	Values
Operating Speed	0~300rpm
Operating Temperature	-20°C +80°C
Operating Humidity	60%RH or more
Contact Material	Precious Metal
Frame Material	Engineering Plastics

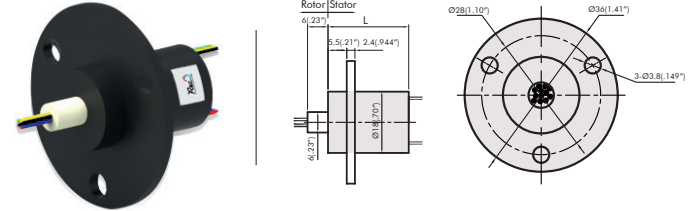
# CAPSULE TYPE SLIP RING

## OD: 18mm

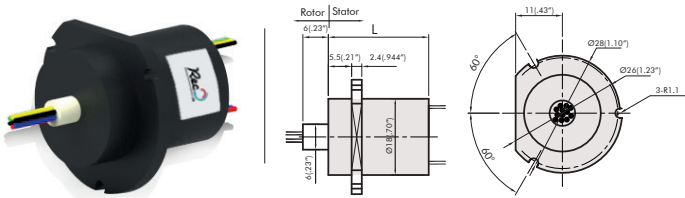
### Various Flanged Series Specific for Application



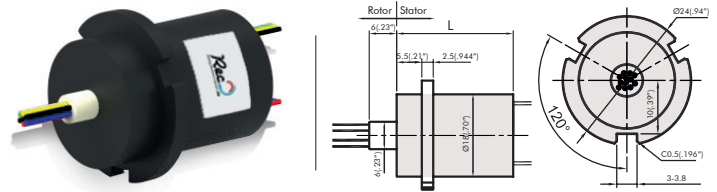
RC18A1				
Models	Body (mm)	L (mm)	Rated Current	Number of Total Circuit
RC18A1.S0602	18	15,9	2A	6
RC18A1.S1202	18	23,7	2A	12



RC18A2				
Models	Body (mm)	L (mm)	Rated Current	Number of Total Circuit
RC18A2.S0602	18	15,9	2A	6
RC18A2.S1202	18	23,7	2A	12

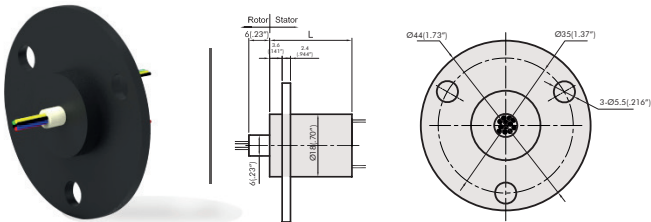


RC18B				
Models	Body (mm)	L (mm)	Rated Current	Number of Total Circuit
RC18B.S0602	18	16,2	2A	6
RC18B.S1202	18	23,7	2A	12



RC18B1				
Models	Body (mm)	L (mm)	Rated Current	Number of Total Circuit
RC18B1.S1402	18	25,5	2A	14

\*For more information about how REC slip ring capsule can fit your specific application, contact our slip ring experts.



RC18D				
Models	Body (mm)	L (mm)	Rated Current	Number of Total Circuit
RC18D.S0602	18	16	2A	6