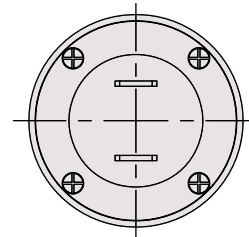
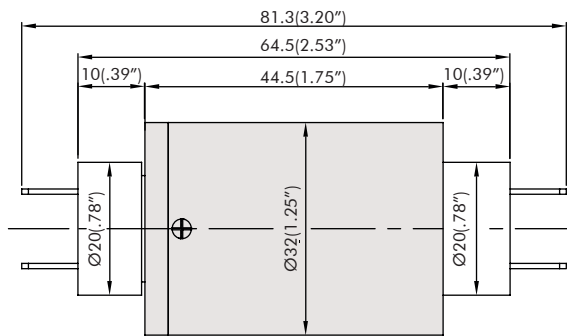


# PIN TYPE SLIP RING IP65

## Description

Pin Type Slip Ring REC - Model IP65 Series OD: 32mm

Pin type slip rings which has IP65 protection class, can be used in any electromechanical system that is requiring unlimited, continuous rotation for transmitting power and/or signal data from a stable structure to rotational structure. With a case diameter as 32 mm, the product can be easily mounted on any end point or in any structure. The body structure of the product as aluminium or ABS, has easy assembling. The product is designed for industrial using and has IP65 protection class. Generally it can be used instead of mercury slip rings. These products, which are mercury-free, are preferred to use in the production and packaging machines in the factory which complies with the EU environmental standards in terms of high IP classes. With the help of PIN type termination the product can be easily mounted. It has alternatives up to 56 contacts in different case diameters. Fiber brushes don't need lubrication or maintenance and be a reason for abrasion for life long using. This type of slip rings uses a bunch of fiber brush technology in the ring and a few of the brushes and rings contact is provided on a point. This ensures long life and uninterrupted transmission.



Sizes mm (inc)

## Standart Product List of IP65 Series

Models	Body (mm)	(L=mm)	Pin Thickness x Width	Rated Current S(2A)	Number of Total Circuit
RC32.P0215-D4	32	44.5	0.8×6.3	2	2
RC32.P0315-D4	32	44.5	0.8×6.3	3	3
RC32.P0215.S0202-D4	32	44.5	0.8×6.3 - 0.8×2.8	2	4
RC32.P0220.S0305-D4	32	44.5	0.8×6.3 - 0.8×2.8	3	5

## Features

Outer Diameter: 32 mm. It has 2 to 5 channels, can be produced as 56 channels for specific applications. It can be combined as 2 and 15 amperage and multiples on power circuits. It provides 250 rpm speed. It has gold contacts, stainless steel body.

## Options

Mechanical Design, Options of Flange, IP Classes, Operating Temperature, Different Current Value Options, Body Structure as AL and ABS, Military Standards

## Electrical Information

Features	Values
Rated Voltage	240VDC/240VAC
Dielectric Strength	500VAC@50Hz, 60s
Insulation Resistance	1000MΩ/500VDC
Electrical Noise	≤10mΩ

## Mechanical Information

Features	Values
Operating Speed	0~250rpm
Operating Temperature	-20°C ~ +80°C
Operating Humidity	60%RH or more
Contact Material	Precious Metal
Frame Material	Aluminum
IP Class	IP65

\*For more information about how REC slip ring capsule can fit your specific application, contact our slip ring experts.